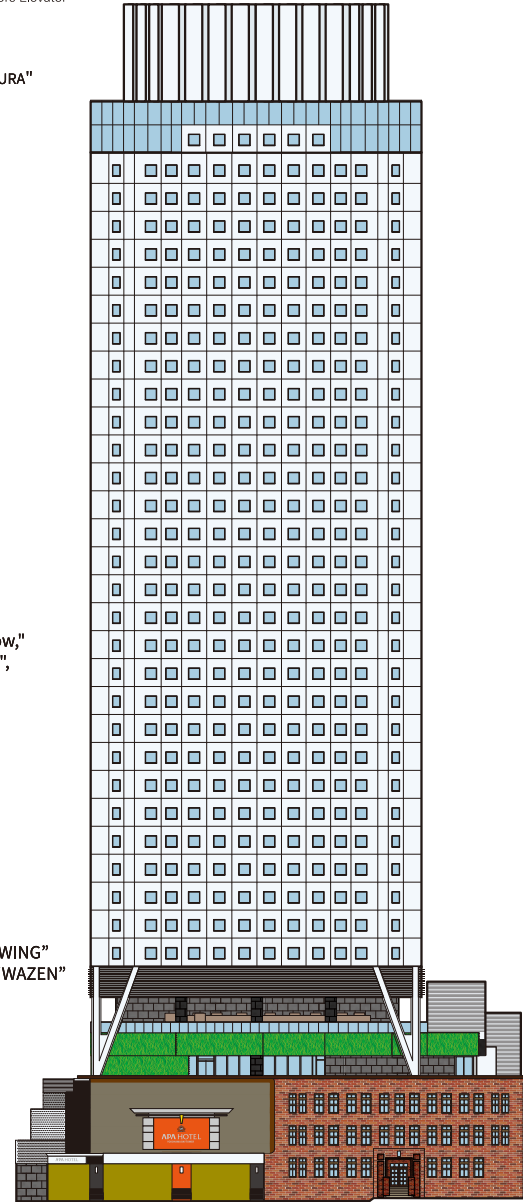
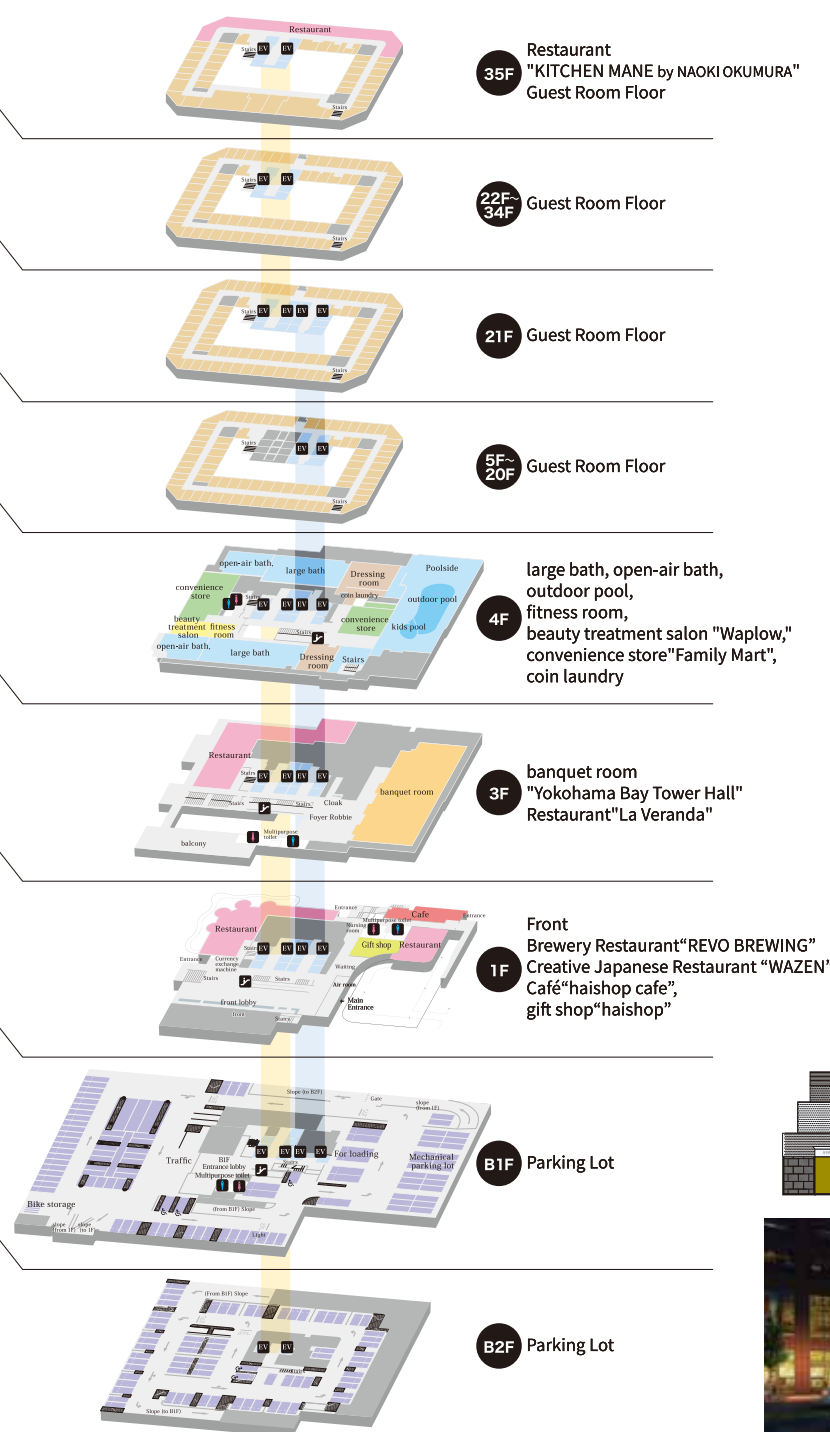


Floor Guide

APA Hotel's new Landmark Tower, "APA Hotel & Resort Yokohama Bay Tower" is an urban resort hotel complete with five restaurants and cafés, including a large bath, an open-air bath, a pool and fitness facilities, and a top floor restaurant with a view.

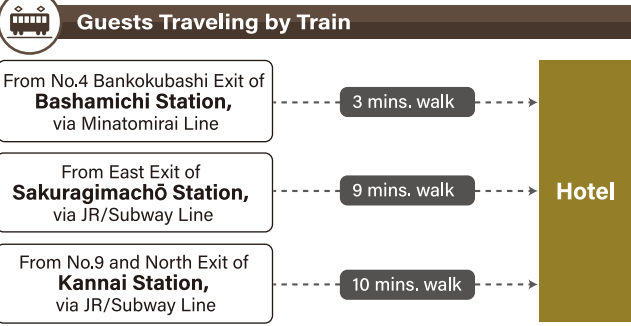


■ Elevator ■ Escalator ■ Women's Restroom ■ Men's Restroom ■ B2F-4F-21F-35F High-Rise Elevator ■ B1F-21F Lower Floors Elevator

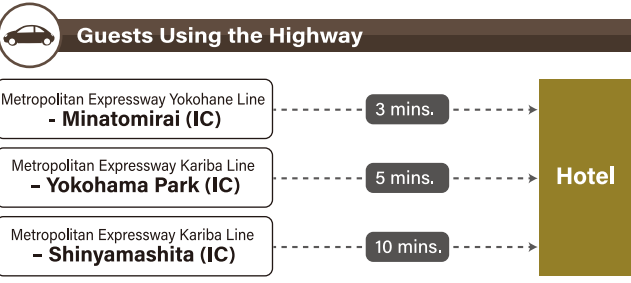


Access

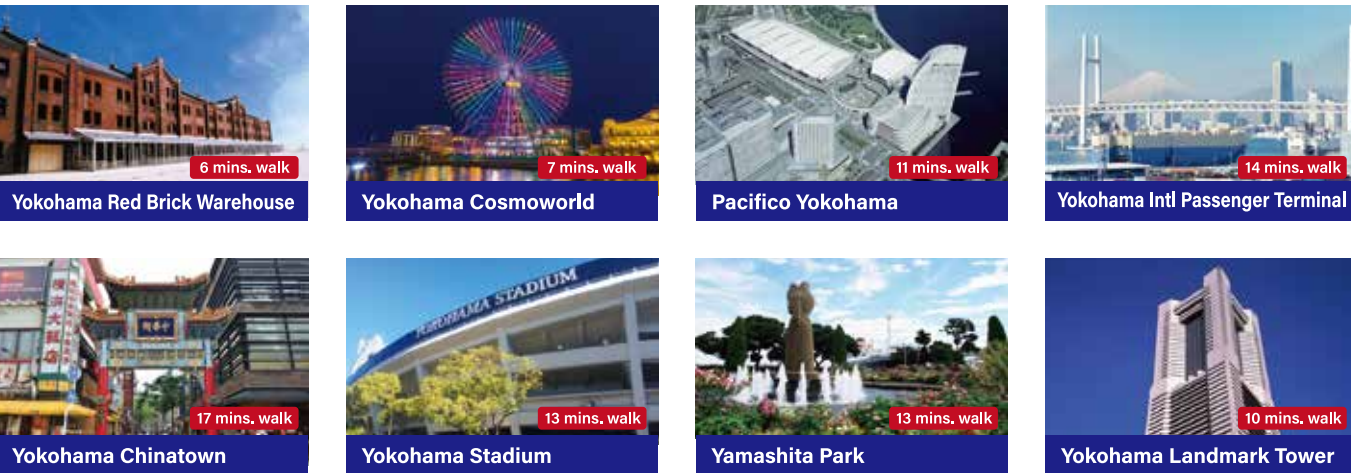
3 mins. walk from Bashamichi Station via Minatomirai Line, 10 mins. by train from JR Yokohama Station. Located in the Yokohama Minatomirai 21 and the Kannai districts, close to major tourist spots in Japan, such as Yokohama Red Brick Warehouse, Yokohama Chinatown, Yokohama Stadium and Yokohama Landmark Tower.



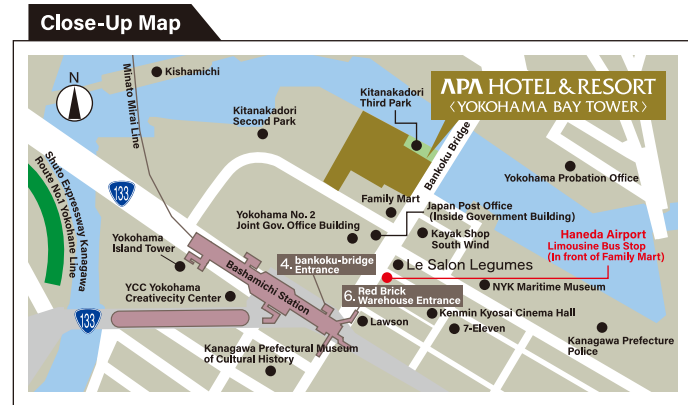
■ Guests going to airport from hotel via train
Transfer from Bashamichi Station via Minatomirai Line to Yokoyama Station to Haneda Airport (approx. 40 mins./¥660)



Sightseeing



©Yokohama Chinatown Development Association
[Others] Prefectural Museum of Cultural History (5 mins. walk), Yokohama Cup Noodles Museum (6 mins. walk), Yokohama Port Opening Memorial Hall (9 mins. walk), Yokohama Museum of Art (6 mins. walk), Yokohama Marine Tower (19 mins. walk), Yokohama Anpanman Children's Museum (18 mins. walk), Yokohama Motomachi Shopping Street (22 mins. walk), Harbor View Park (25 mins. walk), Yokohama Hakkeijima Sea Paradise (30 mins. by car), Yokohama Station (10 mins.), Yokohama Arena (40 mins.), Nissan Stadium (40 mins.), Yokohama Bayside Marina (30 mins. by car), Sankeien Garden 25 mins. by car)



Parking 218spaces	*First-come, first-service, no reservation Rate: ¥2,000/day (12pm - 12pm)	
Bus Usage Fee (Reservation Required) Rate: ¥12,000+ /day(4:00PM - 10:00AM)		
Banquet, Meeting Space Guests	Free for 6 Hours	
Restaurant Guests	Free for 2 Hours(¥1,000+ depending on the restaurant)	

APA HOTEL&RESORT<横浜ベイタワー>

One of the largest hotel buildings in Japan

YOKOHAMA

35 Floors, 2 Basement Levels, with 2311 Rooms

Fully Equipped with Large Public Outdoor Baths and a Pool
Large Banquet Room with Maximum Capacity of 600 Guests

Restaurant, Cafe Bar, Convenience Store, Beauty Salon
A Large Complete Parking Lot with 218 Spaces

September 20, 2019 (Fri.)
GRAND OPEN



※ The contents of the publication are as of July 2019, so please be advised some contents may have changed.
※ Hotel images in this publication are original CG views of its foreseeable completion.

APA HOTEL&RESORT<YOKOHAMA BAY TOWER>

APA HOTEL & RESORT
＜YOKOHAMA BAY TOWER＞

5-25-3, Kaigan-dori, Naka-ku, Yokohama City, Kanagawa, 231-0002

with 2311 Rooms

Contact/Reservation

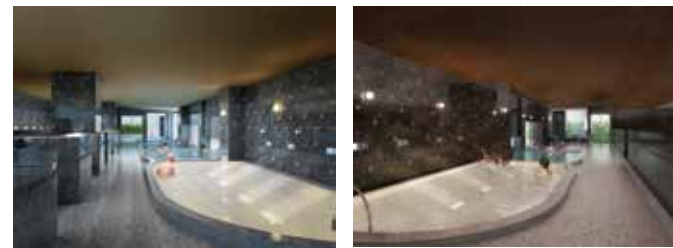
0570-055-111

www.apahotel.com "Get the Best Rates at apahotel.com"

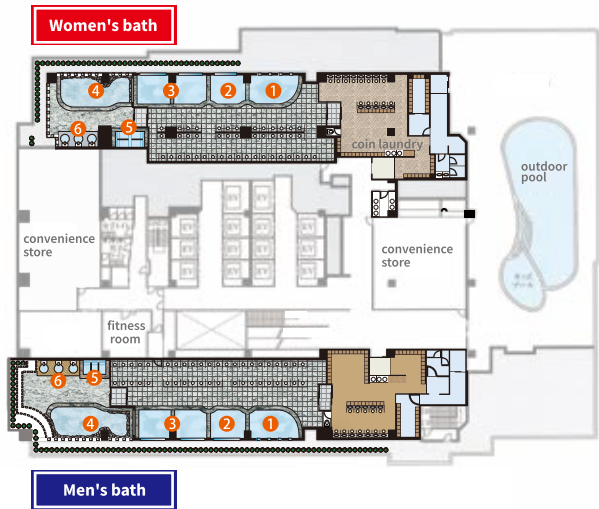
Public Bath

【Big bath】 Large public bath, "Genyou-no-yu" ... In Gengo's words, it means "to wrap gently without being forced". The spacious bath introduces, “semi-natural Koumeiseki hot spring” (artificial hot spring), which uses light stone which is said to have a strong ionization effect, and an open-air outdoor bath which has healing elements.

Business hours	6:00 – 10:00, 15:00 – 2:00 (Last entry@30 mins. before closing)
Remarks	Free of charge for overnight and day trip guests.
Reminders	<ul style="list-style-type: none">• Please bring your room card key.• Please bring towels, toothbrushes and razors from your room.• You can wear Yukata and slippers. (Please refrain from walking with slippers on the 4th floor.)



- 1 Jacuzzi (w/lights)
2 Whirlpool bath
- 3 Vibra hot water
4 Open-air bath
- 5 Lie-down bath
6 Hot water



Shops



1F Gift shop haishop

Operation time:10:30-20:30

A key to cherish the story connecting maker and buyer through carefully crafted products in Japan. We have a selection of easy-to-use products that give you a sense of Japanese culture from the feelings and episodes that are embedded in the product.



4F FamilyMart EAST store・WEST store

Open 24 hours. Drinks, foods, travel goods, etc.
We also have souvenirs and inbound products.ATM, copy machine.
We also develop and support a more comfortable hotel life.



4F Relaxation services WA plow

Relaxation services:
Waplow comes from WA (relax) and the idea of PLOW (plow and loosen).
Please have a luxurious time, so your body and mind can heal.

Facilities



Fitness room 4F

Fee :Free (for hotel guests only)
Business hours:6:00-22:00
Amenities :Bring your own shoes and towels.
Equipment :2 treadmills,
1 rowing machine,
1 cross trainer.



Coin Laundry

Location:Total 11 machines (3 units in men's locker room, 3 units in women's locker room, and 5 units in unisex room)
Business hours:Locker rooms@6:00 -10:00, 15:00 -2:00.
Other General Areas:24 hours
Usage Fees:Washer - ¥300 (up to 4.5 Kg)
Dryer - ¥100/30 mins (up to 4.5 Kg)



Pool 4F

Available only during summer (for a fee).



Currency exchange machine

Other General Areas: 24 hours
Location: 1st floor lobby
• You can exchange foreign currency to Japanese yen only.
We can exchange currency from the following countries/regions: USA, China, Taiwan, South Korea, Hong Kong, Thailand, Singapore, and Euro



Package Counter

Yamato Transport only
*Please fill out the shipping slip in your room (inside the desk drawer) and bring it to the reception desk.
Location: 1st floor information counter

Guest Rooms

Japan's largest hotel with 2,311 rooms* in a 35-story high-rise tower. Guest rooms are from 5th to 35th floors. Our hotel is a new urban hotel based on the concept of high quality and environmentally friendly rooms.

※One of the largest hotel buildings in Japan



Bay Bridge view



Minato Mirai view



Landmark Tower view

Single and Double

Single
Double
for 1~2guests
Size 11㎡
Bed width 140cm

Twin room

Casual Twin Room
Size 13㎡
Bed width 100cm×2
Corner Twin Room for 1~2guests
Size 15㎡
Bed width 120cm×2
Standard Twin Room
Size 14㎡
Bed width 120cm×2
Barrier Free Room
Size 19㎡
Bed width 100cm×2
★Entrance door width 860mm
★Automate-compatible facet in the unit bus
★Lifting stand in the prefabricated bath
★Universal handrail in the unit bath

Superior Twin Room

Superior Twin Room
for 1~2guests
Size 22㎡
Bed width 110cm×2

Deluxe Twin Room /Luxury Twin Room

Deluxe Twin Room
for 1~2guests
Size 34㎡
Bed width 120cm×2
Luxury Twin Room
for 1~2guests
Size 52㎡
Bed width 120cm×2

Triple Room

Triple Room
for 1~3guests
Size 15㎡
Bed width 90cm×3

Executive Suites/Imperial Suites

Executive Suites
for 1~4guests
Size 86㎡
Bed width 120cm×2~4
Imperial Suites
for 1~6guests
Size 120㎡
Bed width 120cm×2~6

Facilities・Services

Check-in	14:00 -
Check-out	- 11:00
Check-out policy	If you do not have any additional charges, just insert the room key into the checkout box.
Extension of Check-out	¥1,000/hour (tax incl.)
Breakfast Rooms	3F Main dining (236 seats), 3F banquet room (440 seats)
Footwear	No slippers allowed except for 4F public bath area.
Storage for valuables	Front Desk.
Elevators	14
Security	Automatic locking doors / EV security.
Wi-Fi	Free in the lobby and in all guest rooms.
Facilities	AED kits, vending machines, Ice makers, microwaves, trouser pressers on each floor, coin laundry

Basic Services	Babies sleeping with parents are free/eco-cleaning for multiple stays/wake-up call/APA Card (point system)/non-smoking rooms/copy & fax machine/cleaning service/massage service (reservation required)/shipping service.
Rentals	Wheelchair/reading glasses/blankets/feather pillows/nail clipper/wine opener/thermometer/desk light/children's yukata and slippers/laptop (fee is applied) *Please be advised that some items are limited.
Emergency equipment	[Firefighting equipment] Sprinklers, fire hydrants, various fire extinguishers. [Alarm equipment] Emergency broadcast equipment, automatic fire alarm equipment. [Power Utility] Emergency Power Generation Equipment. [Others] Monitoring at the disaster prevention center 24 hours a day.
Emergency Contact	Front Desk
Evacuation Location	Front lobby entrance

※ The contents of the publication are as of July 2019, so please be advised some contents may have changed.
※ Hotel images in this publication are original CG views of its foreseeable completion.

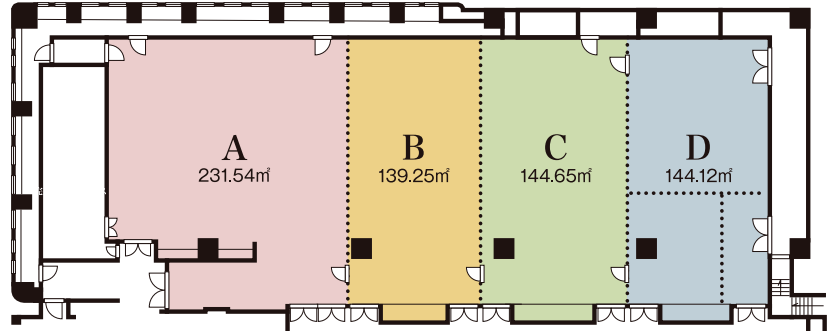
Halls

Yokohama Bay Tower Halls

Facilities and services unique to one of Japan's largest hotels.

There are 4 banquet rooms, including a large banquet room (3F) that can accommodate up to 630 persons.

You can use the hall for events and meetings, as well as banquets, receptions, and training seminars to fit your needs.



※ Hall D can be divided.

Hall Name		A	B	C	D	A~D
Size		231.54㎡	139.25㎡	144.65㎡	144.12㎡	659.56㎡
Capacity	Tables & Chairs	140 guests	80 guests	90 guests	90 guests	390 guests
	Reception	190 guests	120 guests	120 guests	120 guests	600 guests
	Seminars	144 guests	90 guests	90 guests	90 guests	414 guests
	Show	200 guests	140 guests	140 guests	140 guests	630 guests
Ceiling Height		4m				

※ Dimensions listed in the "ceiling height" column will be an indication of the height from the floor when installing temporary construction, etc. Please contact us for hall prices.

Restaurants

3F Restaurant Restaurant "La Veranda"

We have more than 50 kinds of Japanese and Western breakfast dishes, as buffet style. For lunch and dinner, enjoy the chef's signature buffet and entrees prepared as a set menu.

Hours

Breakfast	6:30~10:00 (L.O.9:30)
Lunch	11:30~15:00
Dinner	17:30~22:00



1F Brewery Restaurant REVO BREWING

Restaurant style craft beer brewery. You can always enjoy 20 types of draft beer, such as home-made American, freshly brewed in-house beers, as well as limited edition and collaboration beers.

35F Restaurant KITCHEN MANE by NAOIKI OKUMURA

Hours

Lunch	12:00~15:00 (L.O.14:30)
Afternoon tea	12:00~17:00 (L.O.17:00)
Dinner	17:30~22:30 (L.O.22:00)

"OLD NEW OLD YOKOHAMA"
Yokohama, which has always been in touch with history such as Perry's voyage and the opening of ports, and the Minato Mirai district aiming at the 21st century Mirai city. Enjoy Yokohama Western food by Naoki Okumura, which is in a garden where "history" and "the future" live.

1F Cafe haishop cafe

Hours

7:00~19:00

At the beginning of an important day, I want you to relax while drinking good coffee.
Haishop cafe was born from such a thought.
Please treat the comfortable time in the acclaimed store where you feel the warmth of wood.

1F Creative Japanese Restaurant 和善 - WAZEN -

Hours

Lunch	11:30~14:00
Dinner	17:30~22:30 (L.O.22:00)

Enjoy creative Japanese cuisine made with local food's fresh seafood, and seasonal dishes along with fine sake from all over Japan.