



APA Hotel & Resort 〈Tokyo Bay Makuhari〉

〒261-0021 2-3, Hibino, Mihama-ku, Chiba-shi, Chiba

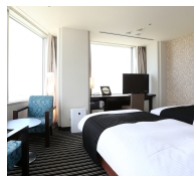
TEL: 043-296-1111 FAX: 043-296-0977 CHECK IN/OUT: 14:00/11:00

GUEST ROOMS: 2007 - Central Tower, West Wing & East Wing

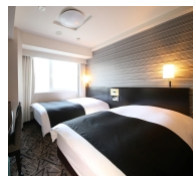
MAIL ADDRESS: ah-rmak@apa.co.jp

GUEST ROOM

has large LCD TV -40 inch in Central Tower and West Wing, 50 inch in East Wing-, luxurious down comforters, toilet seat with warm water flush system, free wi-fi and LAN cable connection. VOD theater is available for ¥1,000/night in all guest rooms. APA HOTEL original bed mattress "Cloud fit" is set in some rooms in Central Tower, all in West Wing and East Wing.



Deluxe Twin Room in Central Tower



Twin Room in East Wing

PARKING LOT

- arrival order
- capacity: 500 cars (limit: 2.5m high, 5.0m long, 1.9m wide)
- guest fee: ¥1,000/night (available from 12:00 p.m. before check-in to 12:00 p.m. after check-out)
*Please pay overtime fee at adjustment machine in parking lot.
- regular fee: ¥300/30minutes
- *Maximum fee is ¥1,200 on weekdays(00:00-24:00), ¥1,800 on Saturdays, Sundays and holidays(00:00-24:00), not available on special dates set by hotel.

BREAKFAST

Japanese and Western buffet style

6:30-10:00 (L/O 9:45)

adult:

advance rate ¥2,200

walk-in rate ¥2,400

child (4-11 years old):

advance rate ¥1,320

walk-in rate ¥1,440



image

SPA and RESTAURANT

3 free large public baths and sauna

"Genyo no Yu"

on 4th floor in Central Tower

14:00-26:00

"Hisho no Yu"

on 1st floor in West Wing

19:00-26:00 / 5:00-14:00

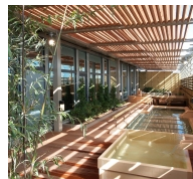
"Wakamurasaki no Yu"

on 2nd floor in East Wing

14:00-26:00 [WOMEN ONLY]

* Guests can come wearing yukata and slippers and use all spa for free.

*Please refrain from wearing yukata or slippers in other space.



open-air bath

Dining & Bar Sky Cruise Makuhari (50F)

<Lunch>

Casual Italian & Sweets Buffet

Weekday 11:00-14:30

Weekend 11:00-15:30 (2 hours limited)

<Dinner>

Weekday course 18:00-21:00

Weekend buffet 17:30-20:30

<Bar time>

Weekday 18:00-23:30

Saturday and holiday 21:00-23:30

*closed at 22:00 only on Sunday



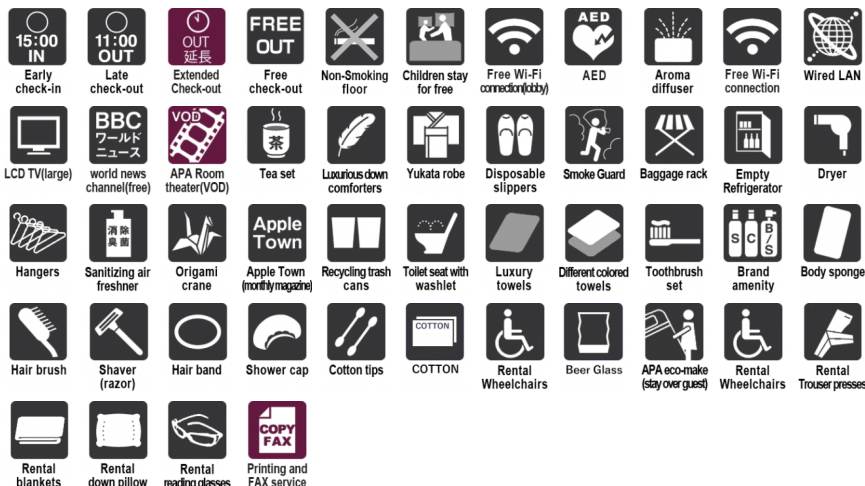
image

SERVICE

EACH HOTEL SERVICE



APA HOTEL COMMON SERVICE



※ For more information on each piece of equipment and services, please contact the hotel staff.



ACCESS



Z17LE第1104号 / Copyright(C)ZENRIN CO.,LTD

Approximately 7 minutes on foot from JR Keiyo Line "Kaihin-Makuhari" station
Approximately 60 minutes from Haneda Airport, approximately 45 minutes from Narita Airport by limousine bus
· to Makuhari Messe East Exit: 1 minute on foot via access way on 2nd floor
· to ZOZO Marine Stadium: 5 minutes on foot
· to Tokyo Disney Resort (Maihama sta.): approximately 16 minutes by JR rapid train from Kaihin-Makuhari sta.



APA HOTELS&RESORTS

No.144